



## Ansys Releases Ansys 2024 R2

The latest release introduces two new products, Ansys TwinAI™ software for enhancing simulation with AI for accurate, evolving digital twins and Ansys HFSS-IC™ solver for deep electromagnetic analysis of ICs.

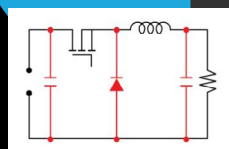
**Ansys**  
[www.ansys.com](http://www.ansys.com)



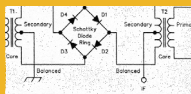
## DC-DC Optimizer

Coilcraft's MagPro DC-DC Optimizer is a complete converter application tool that finds the most efficient inductor solutions and analyzes their performance to optimize your Buck, Boost and Buck-Boost converters.

**Coilcraft**  
[www.coilcraft.com/en-us/tools/dc-dc-optimizer/#](http://www.coilcraft.com/en-us/tools/dc-dc-optimizer/#)



## Mixer Measurement with a Vector Network Analyzer



This app note gives an in-depth look at some of the common mixer measurement applications of VNAs. It covers conversion loss, compression, block converters, vector mixer calibration and much more.

**Copper Mountain Technologies**  
[buff.ly/3LNmjGz](http://buff.ly/3LNmjGz)



## Intro to RF Power Measurements



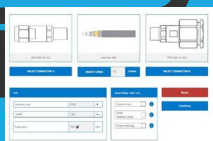
An assortment of instruments and methods are used for measuring power. In this article, the discussion is limited to electrical power, defined as voltage multiplied by current. Discussion is further narrowed to RF power, which implies higher frequency, say signals greater than 10 MHz, requiring more sophisticated instrumentation than a voltmeter due to the behavior of high frequency electrical signals.

**Mini-Circuits**  
<https://blog.minicircuits.com/intro-to-rf-power-measurements/>

## New Cable Configurator Tool

The new cable configurator tool enables users to select the exact product options for their design. The online tool allows for quick access to cable product families.

**Smiths Interconnect**  
[www.smithsinterconnect.com/products/cable-assemblies-harnesses/cable-configurator/](http://www.smithsinterconnect.com/products/cable-assemblies-harnesses/cable-configurator/)



## EMC Pre-Compliance Using Spike

EMC Pre-Compliance measurements are available for SM, SP and BB series devices in Spike Software. This mode provides measurement functions for testing emission regulation requirements.

**Signal Hound**  
[bit.ly/3Hu8Z7W](http://bit.ly/3Hu8Z7W)

